

X-Series Dual-Light™ Flashlight w/Dual Magnets



300 Flashlight Lumens

200 Floodlight Lumens

350 Dual-Light™ Lumens

- 6 hours run-time
- Two integrated hands-free magnets
- 201 meter beam distance



NSP-2424GMX

NSP-2424YMX



TECHNOLOGY

NSP 2424 series



GAVMANAK

0414-622-007

X-Series

Dual-Light™ Flashlight w/Dual Magnets



FEATURES

- Flashlight – Floodlight – Dual-Light™
- CREE® LED technology – 50,000+ hours LED life
- Momentary or constant-on flashlight
- Sharp focused beam for distance illumination
- Unfocused wide-beam floodlight for close-up illumination
- Dual-Light (flashlight & floodlight at same time) for maximum safety and versatility
- Powerful integrated magnets built into the base and clip for multiple hands-free options
- Non-slip grip
- Dual body switches
- Waterproof
- Impact and chemical resistant
- Built-in pocket/belt clip
- Includes removable lanyard
- 3 AA batteries
- Limited 1-year Warranty



Dual Magnets

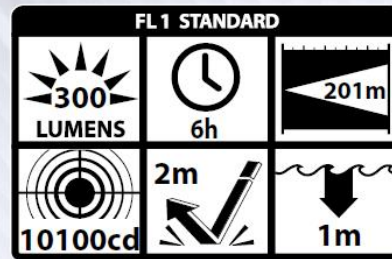
Dual hands-free magnets

Deep parabolic reflector for distance illumination

Floodlight for close-up illumination

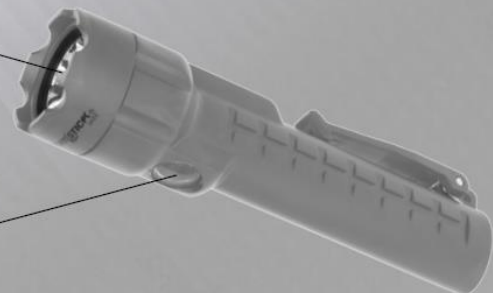
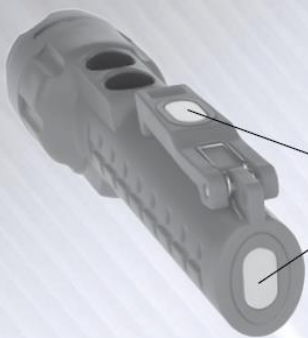
SPECIFICATIONS

- Lumens: flashlight 300, floodlight 200, dual-light 350
- Run-time: flashlight 6 hrs, floodlight 6 hrs, dual-light 4 hrs
- Beam distance: 201 meters
- Water rating: IP-X7 waterproof
- Drop rating: 2 meters
- Length: 7 in., Head Diameter: 1.8 in., Handle Diameter: 1 x 1.3 in., Weight: 6.4 oz.



INCLUDED

- Flashlight
- Removable lanyard
- 3 AA premium batteries



Model	UPC 0 17398
NSP-2424GMX	80617 6
NSP-2424YMX	80618 3



GAVMANAK
0414-622-007